



Curbilders®



Stands the test of time™

Product Overview

For over fifty years the Miller MC Series Curbilders have offered unequalled performance and versatility for the placement of free-standing curb. These simple and efficient self-propelled machines operate on the extrusion principle and provide the most economical means available of constructing small to mid-sized continuous curb from either concrete or asphalt. This quick and efficient process drastically reduces the high labor costs associated with hand formed and poured curb and produces high quality, extremely dense curb at a rate of up to 15 fpm (up to 30 fpm for MC900). Miller's exclusive interchangeable extrusion auger assemblies give each Curbilder the capacity to extrude more shapes and sizes than any machine in its class, from 3-1/2" to 18" high curb. A wide variety of options allow these machines to meet the toughest specification work.

Miller Advantages

- Every model will extrude concrete or asphalt
- Four interchangeable extrusion assemblies with auger diameters from 5" to 10"
- Extrude from right or left side of the machine
- Place curb within 1" of an obstacle
- Extrude steel rod through the curb center (optional hollow auger assembly)
- Extrude over pins (optional form)
- Two-piece 5" and 6" cast auger allowing four separate wear surfaces for extended life
- Easy access and removal of all extrusion components for maintenance and quick clean-up
- Nearly 2,000 curb choices with custom shapes available at no additional cost



MC550/650



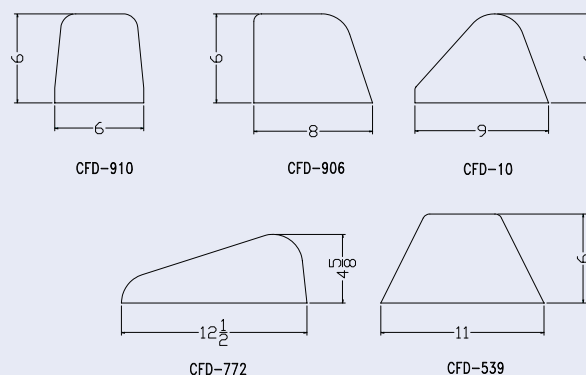
MC900

A Sample of the Nearly 2,000 Curb Designs

Use the following chart as a guide to determining the proper auger.

| Auger Size | Cross Sectional Area | | Height | | Width | |
|------------|----------------------|-------------|--------|-----|-------|-----|
| | Min | Max | Min | Max | Min | Max |
| 5" | 18 sq. in. | 35 sq. in. | 3.5" | 6" | 5" | 9" |
| 6" | 33 sq. in. | 55 sq. in. | 4" | 10" | 6" | 14" |
| 8" | 56 sq. in. | 119 sq. in. | 6" | 18" | 8" | 18" |
| 10" * | 120 sq. in. | 220 sq. in. | 8" | 18" | 10" | 18" |

* MC850 and MC900 only



A high percentage of extruded curbs have a cross sectional area between 33 and 55 square inches, so every Miller Curbilder is equipped with the 6" extrusion assembly as standard equipment. Assemblies of other sizes are available and can easily be retrofitted to machines in the field. Each assembly is complete and includes auger, auger shaft, auger housing, compaction tube, bearings and driven sprocket.

PRODUCT SPECIFICATIONS

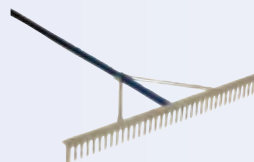
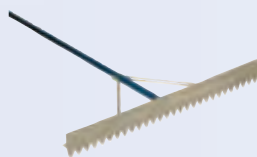


| | MC550 | MC650 | MC850 | MC900 |
|---------------------------------------|---|----------|--|--|
| Operating Weight | 668 lb. | 718 lb. | 918 lb. | 959 lb. |
| Height (steering handle down) | 38" | | 38" | 40.5" |
| Width | 32.25" | | 32.25" | 32.25" |
| Length with Form (steering handle up) | 77.5" | | 77.5" | 91.5" |
| Wheelbase | 52.75" | | 52.75" | 71" |
| Hopper Capacity | 6.1 cubic feet | | 6.1 cubic feet | 9.0 cubic feet |
| Standard Tire Configuration | (9) 8" dia. x 2" solid rubber | | (9) 8" dia. x 2" solid rubber | (4) 4.10 x 3.50 pneumatic front + (3) 8" dia. x 2.5" solid rubber rear |
| Engines | 13 HP Honda 14 HP Kohler | | 20.3 HP Honda | 20.3 HP Honda |
| Engine Starting System | Recoil | Electric | Electric | Electric |
| Fuel Capacity | 1.6 gal. | | 2.3 gal. | 3.3 gal. |
| Standard Auger Configuration | (2) cast 6" dia. x 9" lg. | | (2) cast 6" dia. x 9" lg. | (3) cast 6" dia. x 9" lg. |
| Optional Auger Configurations | (2) cast 5" dia. x 9" lg. (1) welded 8" dia. x 18" lg. | | (2) cast 5" dia. x 9" lg. (1) welded 8" dia. x 18" lg. (1) welded 10" dia. x 18" lg. | (3) cast 5" dia. x 9" lg. (3) welded 8" dia. x 9" lg. (3) welded 10" dia. x 9" lg. |
| Hollow Auger Shaft (to extrude rebar) | Optional | | Optional | Not available |
| Drive System | Automatic centrifugal clutch to enclosed 8:1 gear reducer; final auger drive chain & sprocket Extrusion process provides self-propulsion | | | |
| Steering | Tie rod with 40" steering handle | | | |
| Brake | Friction pad on steering handle | | | |

OTHER AVAILABLE MODELS:

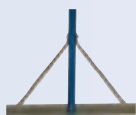
- MC655** Same as MC650, but with modified frame allowing extrusion under existing guardrail.
- MC750** Same as MC650, but with two continuously turning auger assemblies, one mounted on the left and one on the right, allowing immediate changeover from right to left hand extrusion.

Tools

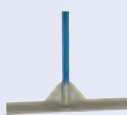


| | All Aluminum Asphalt Lute | Wood Handled Asphalt Lute | All Aluminum Landscape Rake | All Steel Hand Tamp |
|--------------------|---------------------------|---------------------------|-------------------------------|------------------------|
| Handle | 1-5/32" dia. x 82" lg. | 1-1/4" dia. x 66" lg. | 1-5/32" dia. x 66" or 82" lg. | 1-5/16" dia. x 48" lg. |
| Blade | 30" or 36" | 30" | 36" Aluminum | 1/2" x 8" x 8" |
| Blade Edge | Plain or Serrated | Plain | 2.5" Tines | N/A |
| Handle Brace Style | L-9 Standard | L-24 Standard | L-9 Standard | N/A |
| Weight | 3.75 lb. (36" blade) | 3.5 lb. | 3.5 lb. (82" handle) | 18.5 lb. |

L-Bracing



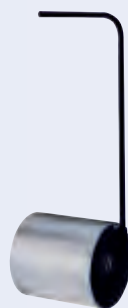
L-9



L-16



L-24



| | All Steel Hand Roller |
|-----------|---|
| Drum Size | 14" O.D. x 3/8" thick 15" wide with beveled edges |
| Handle | Counterweighted to return to upright position |
| Weight | 180 lb. |

For additional information please call 1-800-377-4565 or visit www.millercurber.com



4020 Simon Road
Youngstown, Ohio 44512

1-800-377-4565
Tel: 330-782-8081
Fax: 330-782-1047

www.millercurber.com

